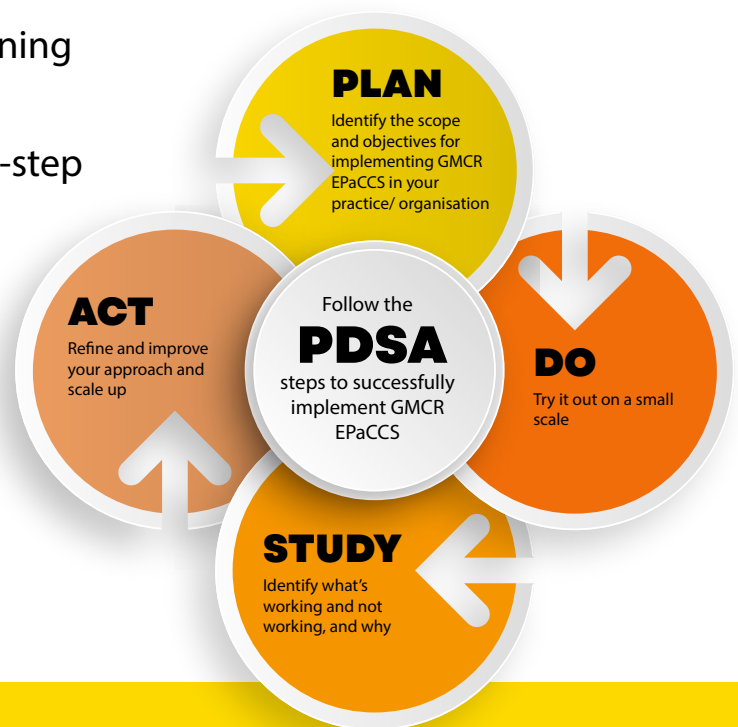


Implementing GMCR EPaCCS Checklist

If you are looking to launch GMCR EPaCCS in your practice or organisation here is a handy checklist to help you get started

- Identified a launch site - e.g. GP practice or PCN, community team, care home
- Secured senior sponsorship
- Engaged local leadership
- Secured buy in and willingness of stakeholders to engage
- Assembled a project team
- Identified that people have access to relevant systems
- Defined success metrics - qualitative and quantitative
- Identified training needs and have a training plan in place
- Defined a project plan using the PDSA 4-step approach



Need more information and help?

Click [here](#) to find out how Health Innovation Manchester can support GMCR EPaCCS implementation in your locality.

For more information visit the FAQs [here](#).

Ready to go? Visit the 'Quick Start Guide' [here](#) to find out more about starting a GMCR EPaCCS.

For training support or technical queries contact nhsgm.gmcrproductteam@nhs.net

To report technical issues, contact your local IT helpdesk.

Click [here](#) for other useful resources.